

Dr. Beatrice Muganda



- ▶ **Dr. Beatrice Muganda** is the Director of Higher Education at the Partnership for African Social and Governance Research (PASGR). Dr. Muganda is an accomplished educationist with expertise in programme planning, design and implementation. She has facilitated formal partnerships among African universities, with Northern partner universities and international knowledge networks around innovative projects that promote excellence, relevance and access in higher education at both masters and doctoral levels. Presently, Dr. Muganda leads the Pedagogical Leadership in Africa (PedaL) project, working closely with multiple partners in distinct contexts to drive sustainable change in delivery of university programmes to strengthen graduate competencies. She has trained over 1000 teaching staff in 60 universities on the African continent in innovative pedagogies. Dr. Muganda has extensive knowledge of issues, challenges and opportunities in African higher education and has proactively engaged a variety of policy actors on higher education transformation. She has also been involved in education policy debates globally: EU–Africa policy dialogues, Wilton Park dialogues, The Africa–America Institute, London School of Economics Africa Summit, Africa Sciedev, University World News, Guardian Global Development Professionals Network, and the Association of African Universities. She has contributed to Kenya national policy documents such as the Medium Term Framework on Education and Training for Vision 2030, and the National Manpower Survey. She holds a B.Ed and M. Phil in Planning and Economics of Education from Moi University, a PhD from the University of Athens, and has received further training at the International Institute of Educational Planning in Paris.

- ▶ *Transforming Teaching and Learning Through Innovation: The PedaL Experience*
- ▶ *2nd Annual International ODeL Conference*
- ▶ *University of Nairobi*
- ▶ *October 12 - 13, 2020*

The Big Picture



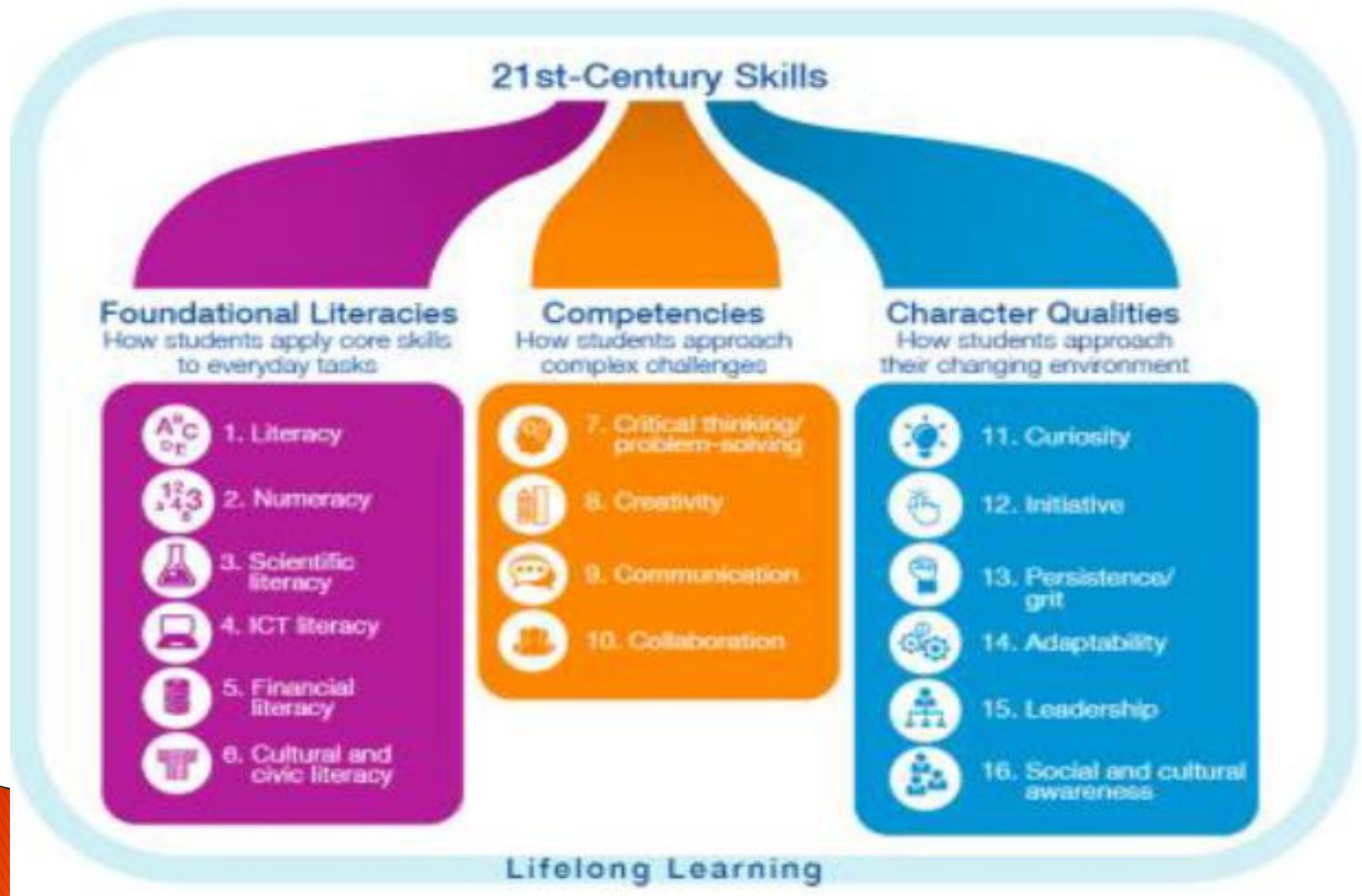
Technological

Innovative

Interactive

Global

Future Proofing: Complex Competencies



The World is Flattening: Globalization 3.0

“The World Is Flat: A Brief History of the Twenty-First Century”

“The world is flat...the flattening of the world means that we are now connecting all the knowledge centres on the planet together into a single global network, which...could usher in an amazing era of prosperity, innovation and collaboration, by companies, communities and individuals... The recognition that the world was flat was unnerving because I realized that this flattening had been taking place while I was sleeping, and I had missed it”.

(Thomas L. Friedman, 2005)

PedaL Online: Technology for Transformative Pedagogy

What is our problem

- ▶ Need for capacity building in HEIs on
 - Pedagogy
 - E-learning
- ▶ Opportunities afforded by ubiquitous technology
- ▶ Relatively lower absorption and integration of technology
- ▶ Disruption – (COVID-19) – scrambling for distance learning solutions
- ▶ Capacity gap in e-learning, greatest in Africa

PedaL Online: Technology for Transformative Pedagogy

What is PedaL Online

- ▶ Fundamental concepts and immerses participants in the practical application of a variety of toolsets, digital resources and strategies for
 - course planning
 - design
 - innovative assessment
- ▶ Interrogate key concepts and theories and apply them in transforming their instructional approaching for better learning outcomes
- ▶ Diverse team - geographically; educationists and non-educationists

PedaL Online: Structure and Content

1

Design

Tools and software for transitioning your course to online and blended modes of delivery

2

Facilitation

Innovative pedagogical strategies and tools – case studies, e-cases, debates, simulations, threshold concept tools etc.

3

Innovative assessment

Tools for assessing learning online – blogs, wikis, discussion forums, rubrics, eportfolios

Pedaling into Class!

Course
design



853+
redesigned
courses

Course
Facilitation

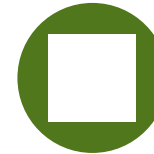


700+
session
plans

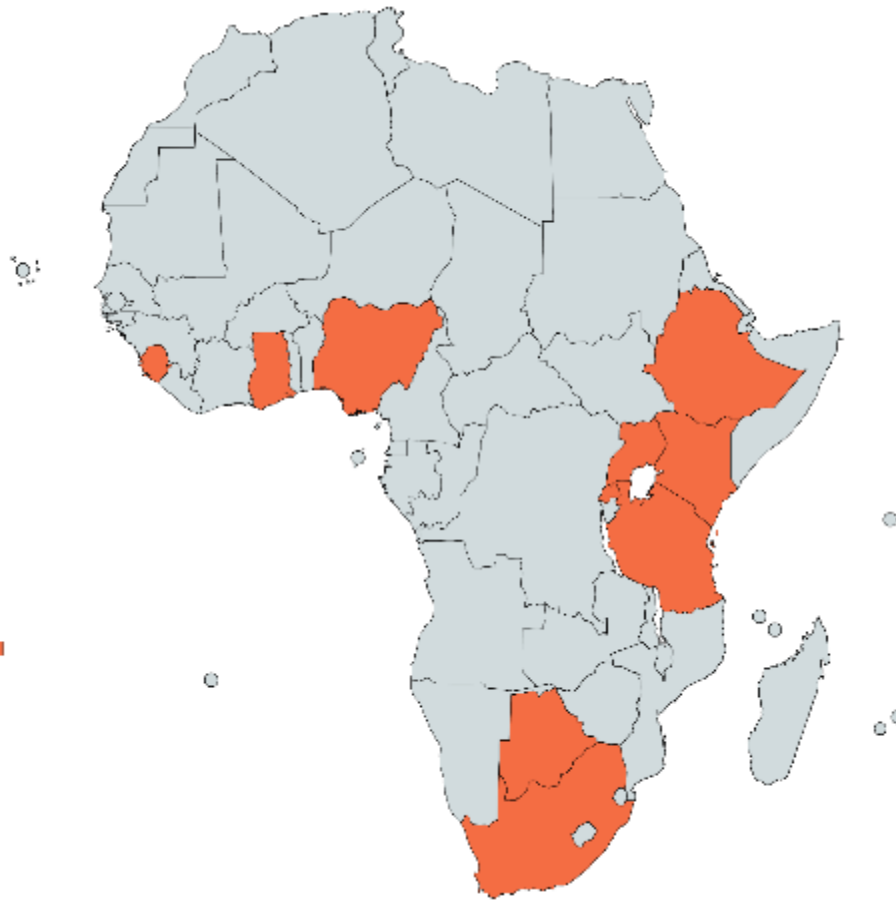
Innovative
Assessment



450+
e-Portfolios
200+ rubrics

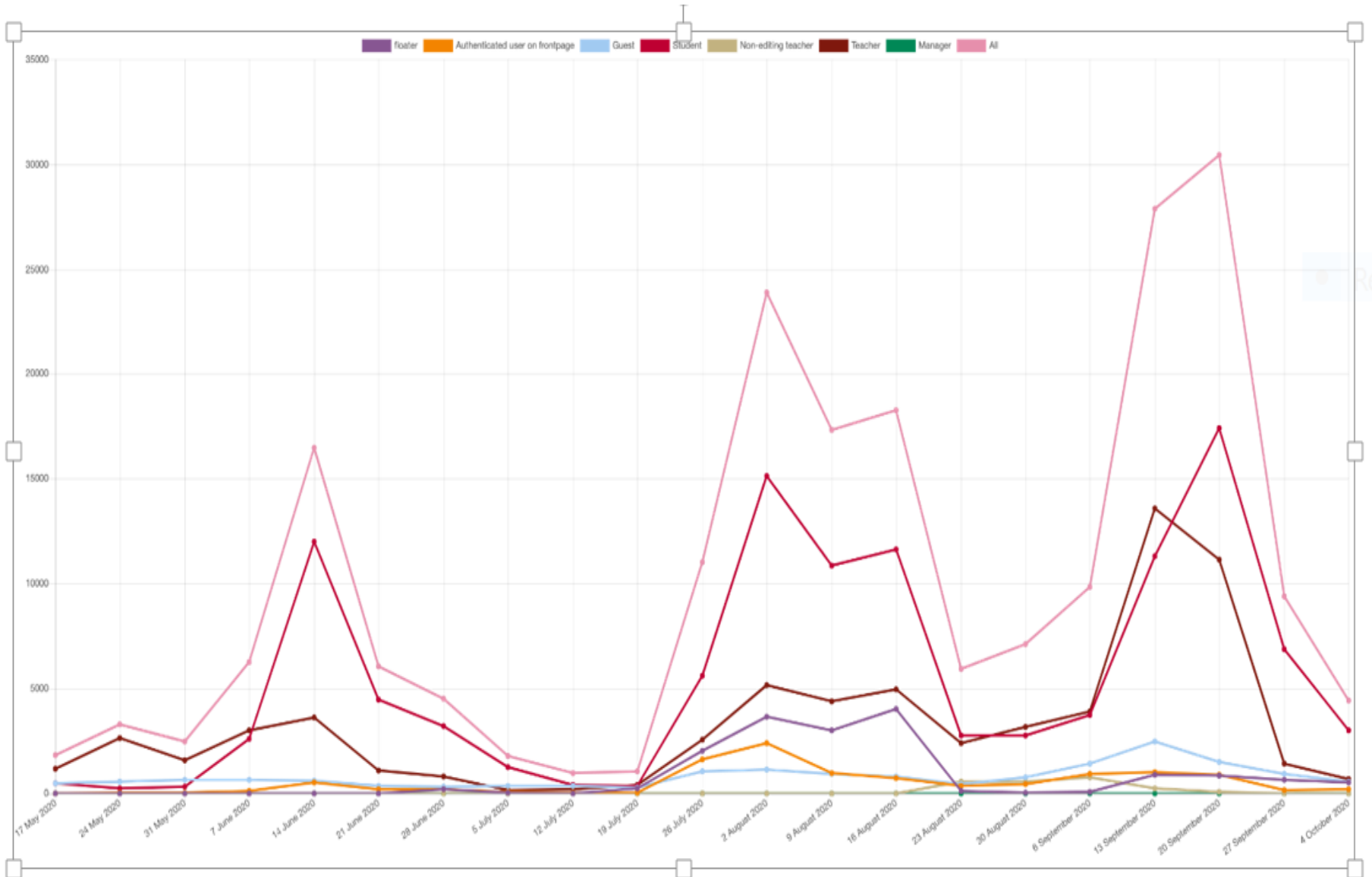


Spatial Distribution



10 Countries
60 Universities
1294
Academics
530 Female
764 Male

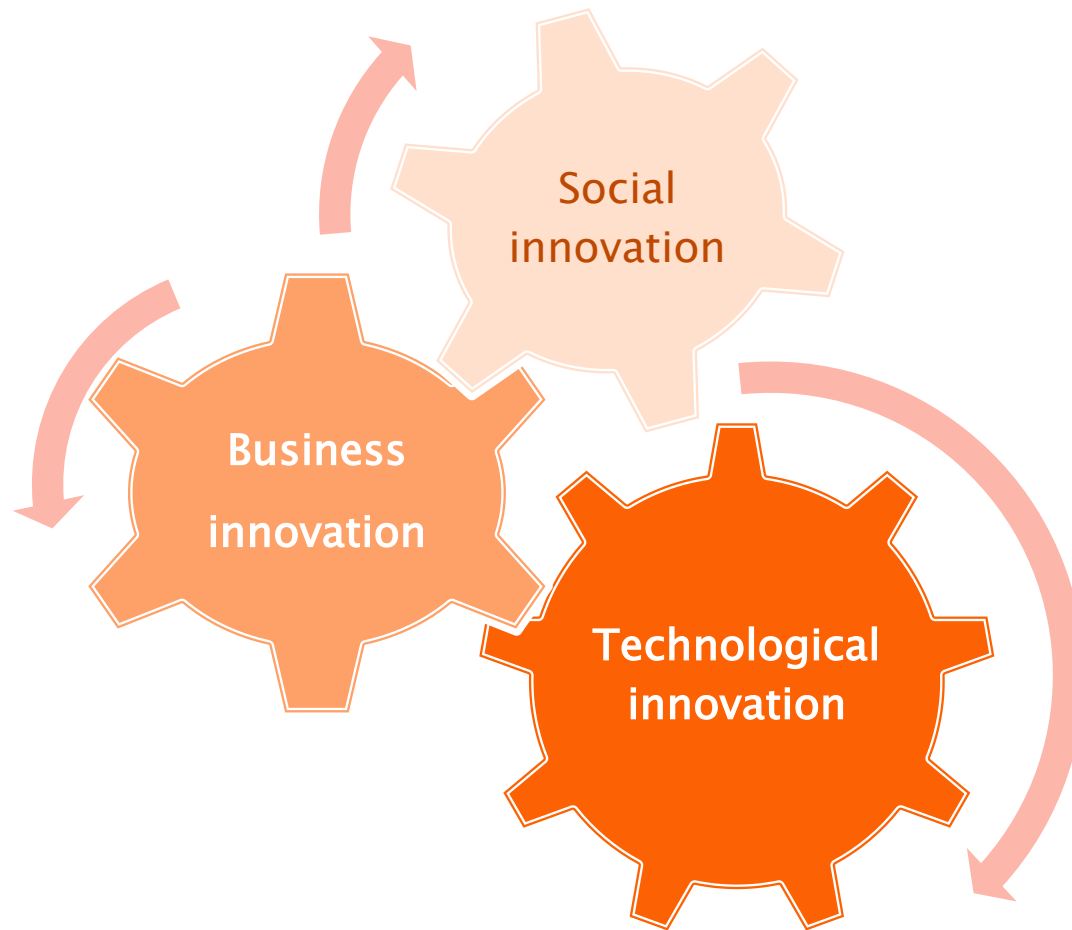
Online Engagement Data



Why PedaL ?

- ▶ Exceptional
- ▶ Dynamic
- ▶ Deep learning
- ▶ Skills oriented
- ▶ Collaborative
- ▶ Global perspective

Innovation System in Higher Education



Innovation Killer Organization Chart

